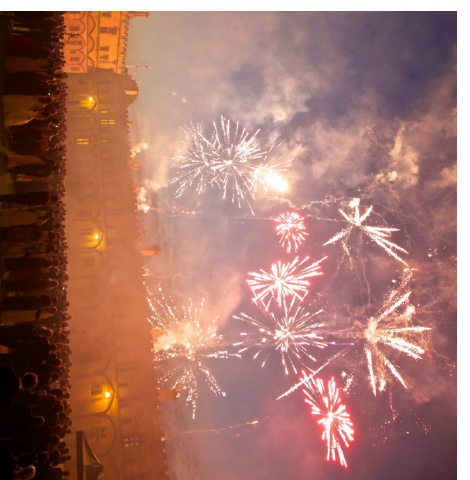
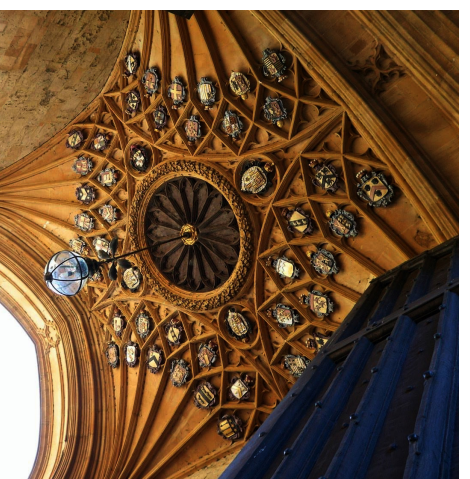
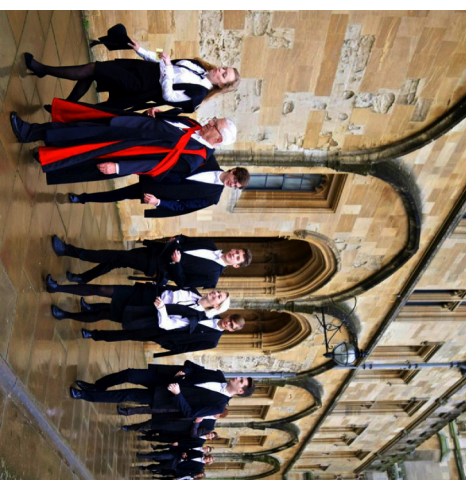
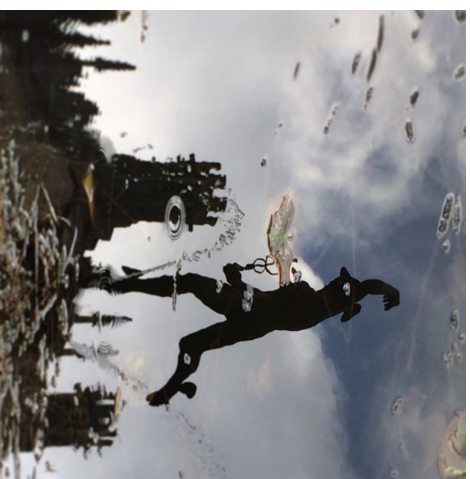
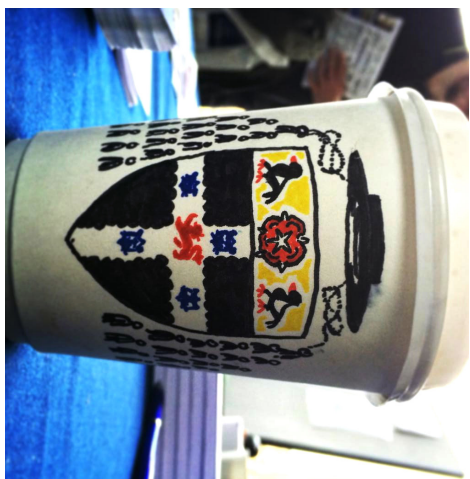
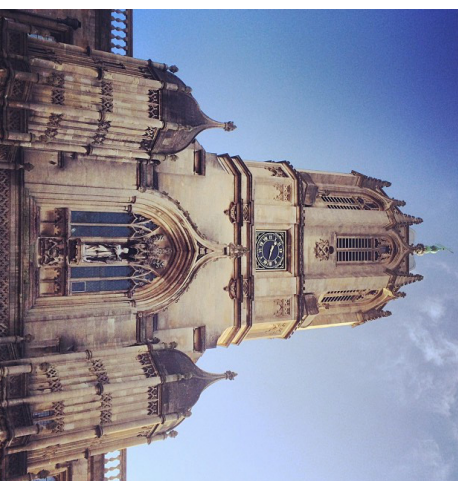
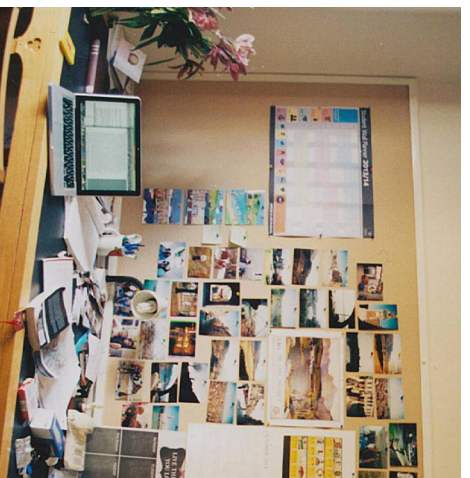
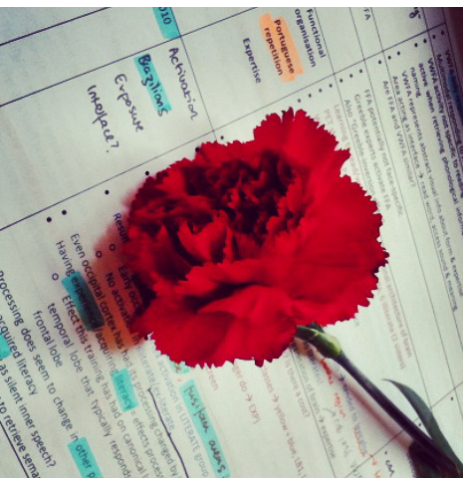
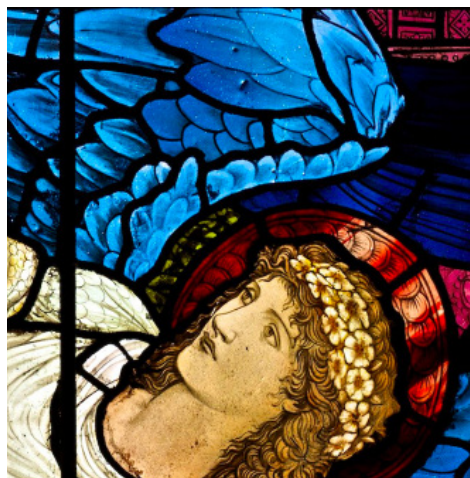
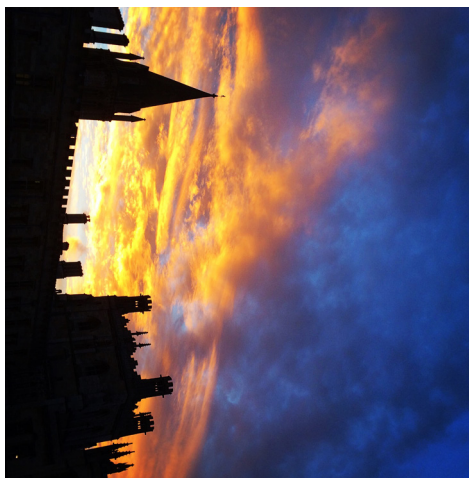
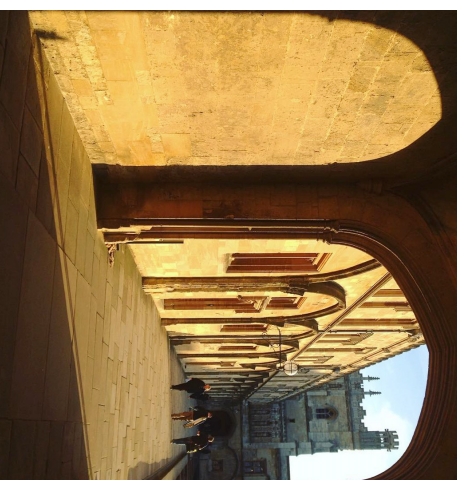
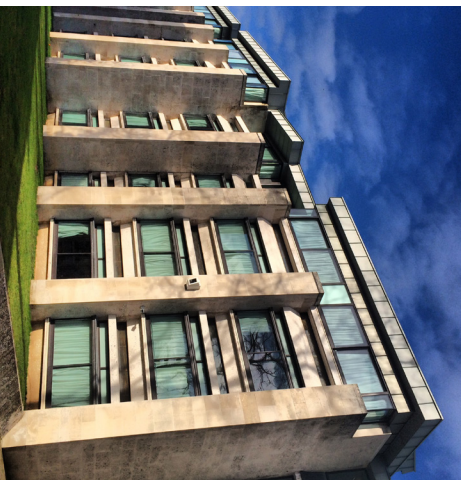
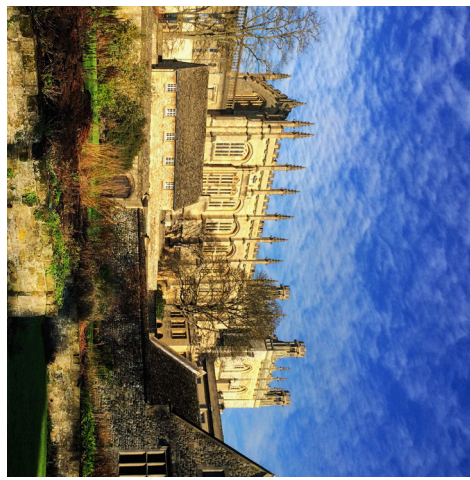


CHRIST
CHURCH
otherwise known as
THE HOUSE
thanks to our Latin name of
ÆDES CHRISTI
OR 'HOUSE OF CHRIST'
although our full name is actually
'THE DEAN & CHAPTER
of the CATHEDRAL CHURCH of
CHRIST in OXFORD
of the foundation of
KING HENRY VIII'

MAKING MAGIC SINCE 1546



HALL FOOD

Eating in our famous dining hall every day (the inspiration for Hogwarts hall in the 'Harry Potter' films) never gets boring - and why would it, with excellent food at amazing prices? Breakfast and lunch (brunch at weekends) are a pay-as-you-go buffet using your uni card. Breakfast choice ranges from a full English to a bowl of coco-pops, while the lunch menu features several main meals and puddings. Most people don't have a kitchen in college so three course dinner is served twice every night and paid for on a termly basis (which works out at less than £3 a day!) The first sitting is 'informal' and is usually quicker and busier. 'Formal hall' is an hour later, everyone wears their gown, Latin grace is read, and sometimes there's extra helpings too! Some colleges offer a buffet dinner, which you might prefer, but it's nice to be able to sit down with your friends and catch up on how everyone's essay is going... because of course that's all we ever talk about! Twice a term we have a fancy black tie 'guest dinner' where you get to dress up, bring a guest, and eat amazing food prepared the Head Chef at affordable prices. You have to ballot for these popular events, but everyone is guaranteed to go to at least one a year if they want to. Hall caters for many special diets - including vegetarian, vegan, gluten-free, dairy-free and halal.

ENTZ

Our two Entz Reps (elected each term) make sure the college calendar is full of things to do: discounted cinema trips, pub quizzes, open mic nights in the Undie (our college bar). There's something to suit everyone, from quiet film nights with popcorn and petting zoos, to our twice-termly 'Bops' (fancy dress discos which run late into the night). Christ Church also boasts a college choir, life drawing and print-making classes in our own Art Room, subject-specific societies and a JCR telescope. Christ Church Dramatic Society stage two plays in the Cathedral Garden each summer and everyone is encouraged to get involved! With an annual arts week, Christ Church Music Society concerts and events, a ball to organize every three years, and a large college community there's always someone to chat to and things to do - life's never dull at Christ Church!

Did you know?
Our Picture Gallery houses drawings by Michelangelo & Leonardo Da Vinci

ACCOMMODATION

Christ Church guarantees accommodation for the whole of your degree, so you never have the hassle of finding a house (not the case for every college!) Even better, every room costs exactly the same price and includes wi-fi access and weekly cleaning. And even if you don't get an en suite, you'll have your own sink and fridge in your room. Heating and electricity are charged separately.

Nestled away behind the older buildings in most colleges is the obligatory modern block for freshers, and Blue Boar is our's. All the rooms are spacious, have en-suite bathrooms, comfy beds, a desk, copious shelves and drawers, great wardrobe space, and a mini fridge. There's a small tea-point on every staircase with a toaster and microwave, and you can bring a kettle. Only freshers live here, so it's lots of fun and really easy to meet people. While most people live here in first year, some freshers are allocated rooms in other staircases around college.

BLUE BOAR Quad

PECK QUAD

Peckwater is one of the most beautiful quads in Oxford, built in the 1700s, with oak-panelled rooms, comfy sofas and fantastic views of our library. Most rooms are 'sets', reserved for 2nd years and above, with two bedrooms and a living room which is shared with a friend of your choice. Shared bathrooms are good and frequent and some 'sets' even have chandeliers! There are some single garret rooms in the roof too. Peck is located next to Canterbury Quad - the smallest quad in college with huge single rooms and 'sets' (and the Christ Church Picture Gallery too!)

MEADOWS

Half of the rooms in this beautiful Victorian building overlook Christ Church's gorgeous meadows - some even have balconies! The rooms here are large, quiet, comfortable and all have a big en suite bathroom, making Meadows a really great place to live, especially in 3rd year. Old Library rooms in this quad are even bigger but share toilets and showers.

THE LIDDELL BUILDING IFFLEY ROAD

Off-site accommodation located on Iffley Road - a 10 minute walk or 5 minute cycle from college. The shared flats have 3 or 4 bedrooms, a bathroom, and a kitchen. Some of the best things about Liddell are that you can choose who you live with, it has great cooking facilities, and lots of bike storage. The site is shared with Corpus Christi so it's a great place to make friends. There's a common room which is perfect for parties (especially for the many 2nd years who live here). Close to great sports facilities, independent shops, a handy Sainsbury's, and a Tesco. Over the road from the main college site is St Aldate's Quad, with single rooms (including a few en suites) and shared kitchen facilities.

WELCOME TO CHRIST CHURCH Oxford

Hello, and welcome to our alternative prospectus! It's been written and designed by students who not so long ago were in the same position as you: probably overwhelmed by the need to make a decision not only about which university to apply to, but in the case of Oxbridge, which college. We won't give you all the detailed information you can find elsewhere about courses and finance, instead we're here to fill you in on what everyday life is like at 'The House', and hopefully make it a bit easier to decide which college is best for you - read on for everything from wardrobes to wizards! Be excited, even be a little nervous, about applying (everyone is!) but don't - whatever you do - let yourself be put off by jargon or fancy architecture. Not only is Christ Church a unique place to live but an ordinary one too, where people sleep, watch TV and microwave leftovers.

Did you know?
Lewis Carroll wrote 'Alice in Wonderland' while he was a maths tutor here, basing her on Alice Liddell, the daughter of the Dean

COLLEGE LIBRARY

Housed in a beautiful 18th century building, Christ Church library is open until midnight, seven days a week. There are power sockets at the desks and wi-fi, as well as all the books you'd expect to find - set texts for your course which you can borrow. Precious manuscripts and Cardinal Wolsey's hat are kept in the Upper Library, open for special exhibitions. Our separate Law Library is open 24/7, just for law students.

WHAT'S A TUTORIAL? AND WHAT ARE THEY REALLY LIKE?

The main aim of a tute is to reinforce your knowledge and understanding of a topic, so tutors may play devil's advocate to help you consider all sides of an issue, or ask you to explain why you drew a particular conclusion in your essay or problem sheet. A tutorial is often the focal point of your week (from an academic perspective at least!) and is one of the things which makes studying at Oxford unique. Most people have one or two each week. A tute will usually be two or three students with one tutor. They may sound daunting, but tutes are really a lot of fun, and a great way to get stuck into complex and interesting topics! Forget the stereotypes; tutors are just friendly, normal people who have a genuine interest both in their subject and in your success! And they understand the pressures of university, so might forgive an odd sleepy tute or late essay.

THREE FACTS ABOUT CHRIST CHURCH CATHEDRAL

1. Our college chapel is also Oxford's cathedral, having started life as a Norman priory. The Advent Carol service, where the choir move around the darkened cathedral gradually lighting candles, is unmissable.
2. The Cathedral Choir is one of the best in Oxford, composed of boys from the Cathedral School and student choral scholars. Did you know that they sang the theme tunes for Mr Bean and The Vicar of Dibley?
3. The stained glass is spectacular - a rare depiction of Thomas Becket exists on one window and there's another by Pre-Raphaelite artist Edward Burne-Jones telling the story of St. Frideswide, Oxford's patron saint.

WELFARE

Student life at Oxford, just like any university, can get stressful. You're living alone for probably the first time, you have lots of work, and you're still finding your feet. It's fun, but sometimes it can get tough as well. Christ Church's welfare team is made up of students and staff, including our wonderful Chaplain and Peer Mentors. They're always there for those who might be struggling, be it with a quick chat and cup of tea or more regular professional help. The Chaplain also runs weekly baking sessions and 'Brain Strain Tea' where everyone can come together for an hour to think about cake instead of work! There's regular 'Welfare Teas' too and every student is entitled to one free cake a year!

NEAREST & DEAREST

Some of the city's best businesses are right on our doorstep, like G&D's Ice Cream café. They hand-make ice cream in loads of exciting flavours, are literally just over the road, and open until midnight every day of the week. House Cocktail Bar is just a few minutes away too, and ChCh students get discounts on their range of inventive drinks. Similarly The Bear and St Aldate's Tavern are two of our closest pubs. While most colleges have a kebab van nearby, we also have Pizza Artisan who bake fresh pizzas in their wood-fired oven and serve them straight from a vintage van! Delicious!

SPORT

There's Christ Church teams for a whole range of sports, from football to ultimate frisbee! The Boat Club is very active too and everyone heads down to the boat house for rowing events like Christ Church Regatta - open only to novice rowers. We have our own punts and a rowing boat for more leisurely river fun down there too. Over the road are our squash courts and down by the Liddell Building are our all-weather pitches, tennis courts and rugby and football fields.

Did you know?
King Charles I held his parliament in our hall during the English Civil War

FOLLOW US:
facebook.com/ChChAccess
twitter.com/chch_access
instagram.com/christchurchoxford
www.chch.ox.ac.uk/admissions
Photos: Ralph Williamson, Nathan Stazicker, Meltem Osman & Lynton Lees
Text: Meltem Osman, Francesca D'Argenio, Marco Narajos & Nathan Stazicker
Design: Nathan Stazicker

